

**7 Sunday THE EPIPHANY OF OUR LORD**

**10.00am SOLEMN MASS**

*Processional:* 52  
*Kyrie & Gloria:* Harris in F  
*Psalm:* 72.1-8 - Rooke  
*Acclamation:* Salisbury Alleluia - Walker  
*Offertory:* 47  
 O'er the hill and o'er the vale - Davy  
*S, B, & AD:* Harris in F  
*Communion:* We have seen his star  
 In the bleak midwinter - Stopford  
 49(ii)  
*Closing hymn:* 36  
*Organ (PS):* Mit Fried und Freud ich fahr dahin  
 BWV 616 - Bach

**6.00pm CHORAL EVENSONG & BENEDICTION**

*Responses:* Byrd  
*Office hymn:* 46(ii)  
*Psalm:* 98 - Smart  
*Canticles:* Wesley in F  
*Anthem:* We Three Kings - arr. Stopford  
*Hymn:* 51  
*Benediction:* 269(i) (Part 2)  
*Tantum ergo:* 268 (Part 2)  
*Organ (SA):* Prelude on 'Dix' - Fletcher

**14 Sunday THE SECOND SUNDAY OF EPIPHANY**

**10.00am SUNG MASS**

*Processional:* 332  
*Kyrie & Gloria:* The Addington Service - Shephard  
*Psalm:* 139 - Adams  
*Acclamation:* Bevenot (A)  
*Offertory:* 271  
 O be joyful in God  
*S, B, & AD:* The Addington Service - Shephard  
*Communion:* The Lord said unto them  
 A New Year Carol - Britten  
 353  
*Closing hymn:* In Christ alone  
*Organ (PS):* Offertoire (L'organiste moderne)  
 - Lefébure-Wély

**14 Sunday (cont.)**

**6.00pm CHORAL EVENSONG** (Girls and Men)  
*Responses:* Smith  
*Office hymn:* 256  
*Psalm:* 96  
*Canticles:* Morley Fauxbourdons VIII & V  
*Anthem:* Here is the little door - Howells  
*Hymns:* 56  
 225  
*Final responses:* Thomas  
*Organ (SA):* Wie schön leuchtet der Morgenstern  
 - Pachelbel

**21 Sunday THE THIRD SUNDAY OF EPIPHANY**

**10.00am SUNG MASS** (Girls and Men with the Orchestra of St Thomas')

*Processional:* 364(185)  
*Kyrie & Gloria:* Mass of St Thomas - Smith  
*Psalm:* 128 - Rooke  
*Acclamation:* Celtic Alleluia - O'Carroll  
*Offertory:* I, the Lord of sea and sky  
 The right hand of the Lord  
*S, B, & AD:* Mass of St Thomas - Smith  
*Communion:* All wondered at the gracious words  
 Brightest and best - Archer  
 As the deer pants  
*Closing hymn:* 485  
*Organ (SA):* Marche Triomphale - Rawsthorne

**6.00pm CHORAL EVENSONG**

*Responses:* Ayleward  
*Office hymn:* 349  
*Psalm:* 33  
*Canticles:* D. Purcell in E minor  
*Anthem:* Day by day - How  
*Hymns:* 388  
 484(167)  
*Final responses:* Thomas  
*Organ (PS):* Prelude and Fugue in G BWV 541 - Bach

**28 Sunday THE FOURTH SUNDAY OF EPIPHANY (Education Sunday)**

**10.00am SUNG MASS** (Girls and Men)

*Processional:* 436  
*Kyrie & Gloria:* A New People's Mass - Murray  
*Psalm:* 111 - Adams  
*Acclamation:* Murray (C)  
*Offertory:* From heaven you came  
 The right hand of the Lord  
*S, B, & AD:* Stanford in Bb / F  
*Communion:* All wondered at the gracious words  
 There shall a star - Mendelssohn  
 629  
*Closing hymn:* 368  
*Organ (PS):* Toccata - Mushel

**6.00pm CHORAL EVENSONG**

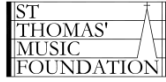
*Responses:* Clucas  
*Office hymn:* 54(i)  
*Psalm:* 34.1-10  
*Canticles:* Ashworth in D  
*Anthem:* God be in my head - Carter  
*Hymns:* 352  
 363  
*Final responses:* Thomas  
*Organ (SA):* Largo from 'Winter' - Vivaldi

Services are sung by the Parish Choir unless otherwise stated.



You can also view this Music List on our website  
[www.music-at-st-thomas.org.uk](http://www.music-at-st-thomas.org.uk)

COMING SOON AT ST THOMAS'...



Saturday 10th February, 7.30pm  
BRENTWOOD PHILHARMONIC ORCHESTRA

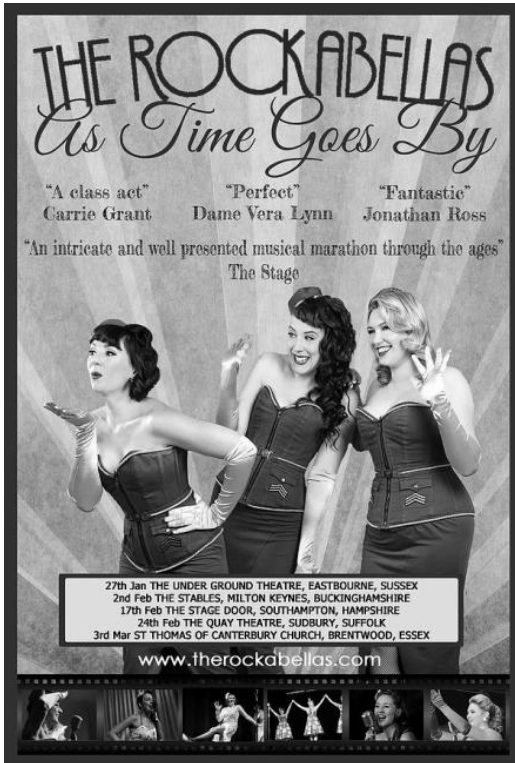
A concert of lively all-American favourites  
Conducted by Brian Lynn

Tickets available here:  
<http://www.wegottickets.com/event/419502>

Saturday 3rd March, 7.00pm for 7.30pm  
THE ROCKABELLAS

St Thomas' Music Foundation is very proud to present this highly acclaimed vintage vocal trio.

Tickets available from the Church Centre or via:  
<https://www.ticketsource.co.uk/date/420344>



## Music at St Thomas'

### Vicar

#### Licensed Lay Minister

Lesley Lynn BEd(Hons)

#### Honorary Assistant Priest

The Very Revd Ossie Trellis SSC

#### Director of Music

Sam Adams BMus(Hons) DipRSCM

#### Assistant Director of Music & Director of the Girls' Choir

Polina Sosnina MSc BA DipABRSM

#### Director of the Orchestra of St Thomas'

Brian Lynn LRAM

#### Director of Music Emeritus

David Rooke ACertCM FRSA FASC FSCM FGMS

#### Sub Organist

Peter Best BA

#### Deputy Organist

John Gowlett BSc(Econ)(Hons) PGCE FRGS

#### Second Assistant Organist

Emma Macallan BMus(Hons) PGCE

#### Neville Mansel Memorial Organ Scholar & Librarian

Daniel Carter

#### Neville Mansel Memorial Organ Scholar

Alex Evans



Parish Choir Girls' Choir Becket Singers  
Becket Consort of Voices *SongCycle* Reflection  
Neville Mansel Memorial Organ Scholarship  
Orchestra of St Thomas' *Lunchtime Live!*  
St Thomas' Music Foundation

The Parish Church of Saint Thomas of Canterbury Brentwood

# MUSIC LIST JANUARY 2018



## Music at St Thomas'

Parish Choir Girls' Choir Becket Singers  
Becket Consort of Voices *SongCycle* Reflection  
Neville Mansel Memorial Organ Scholarship  
Orchestra of St Thomas' *Lunchtime Live!*  
St Thomas' Music Foundation

[www.music-at-st-thomas.org.uk](http://www.music-at-st-thomas.org.uk)